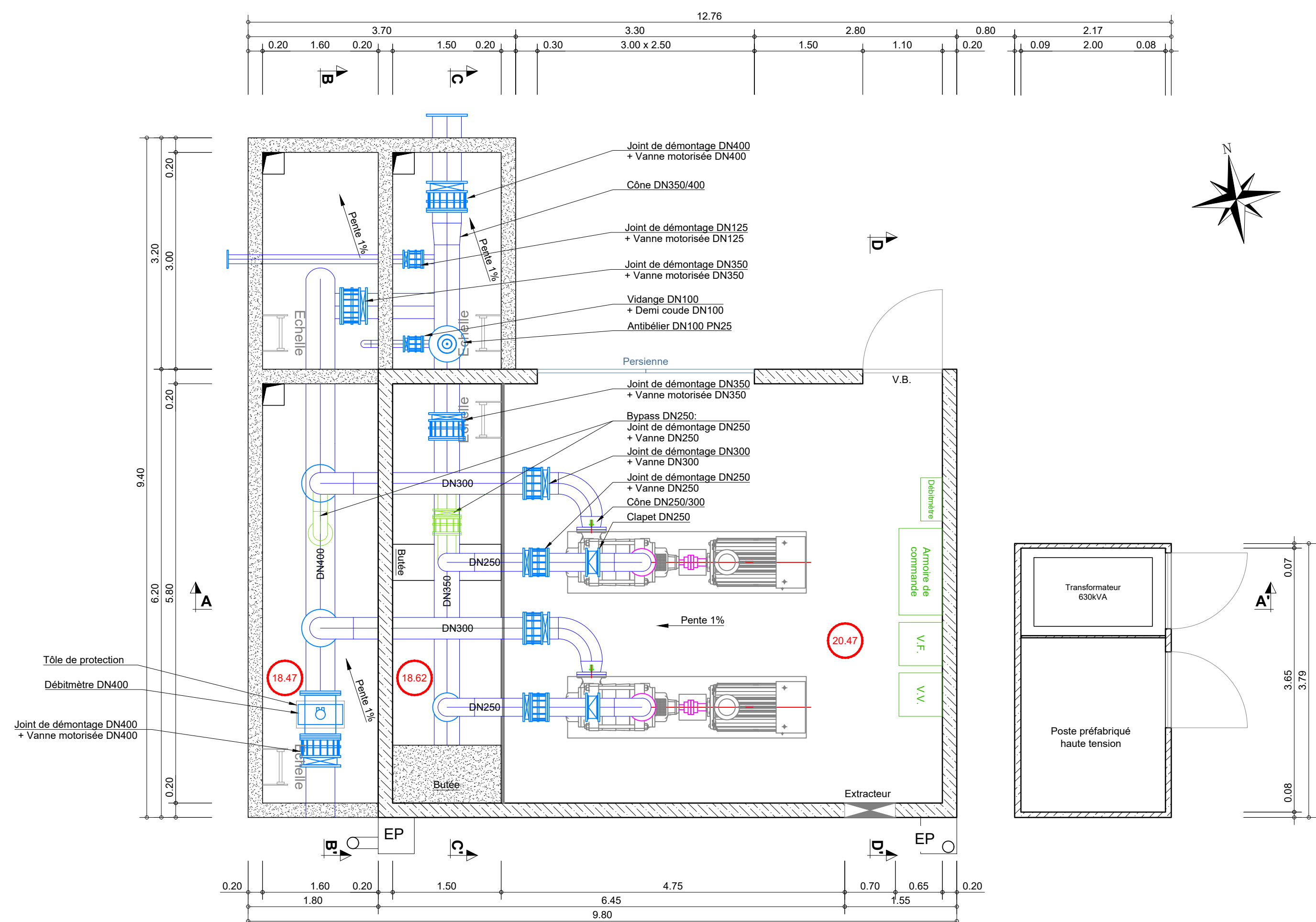
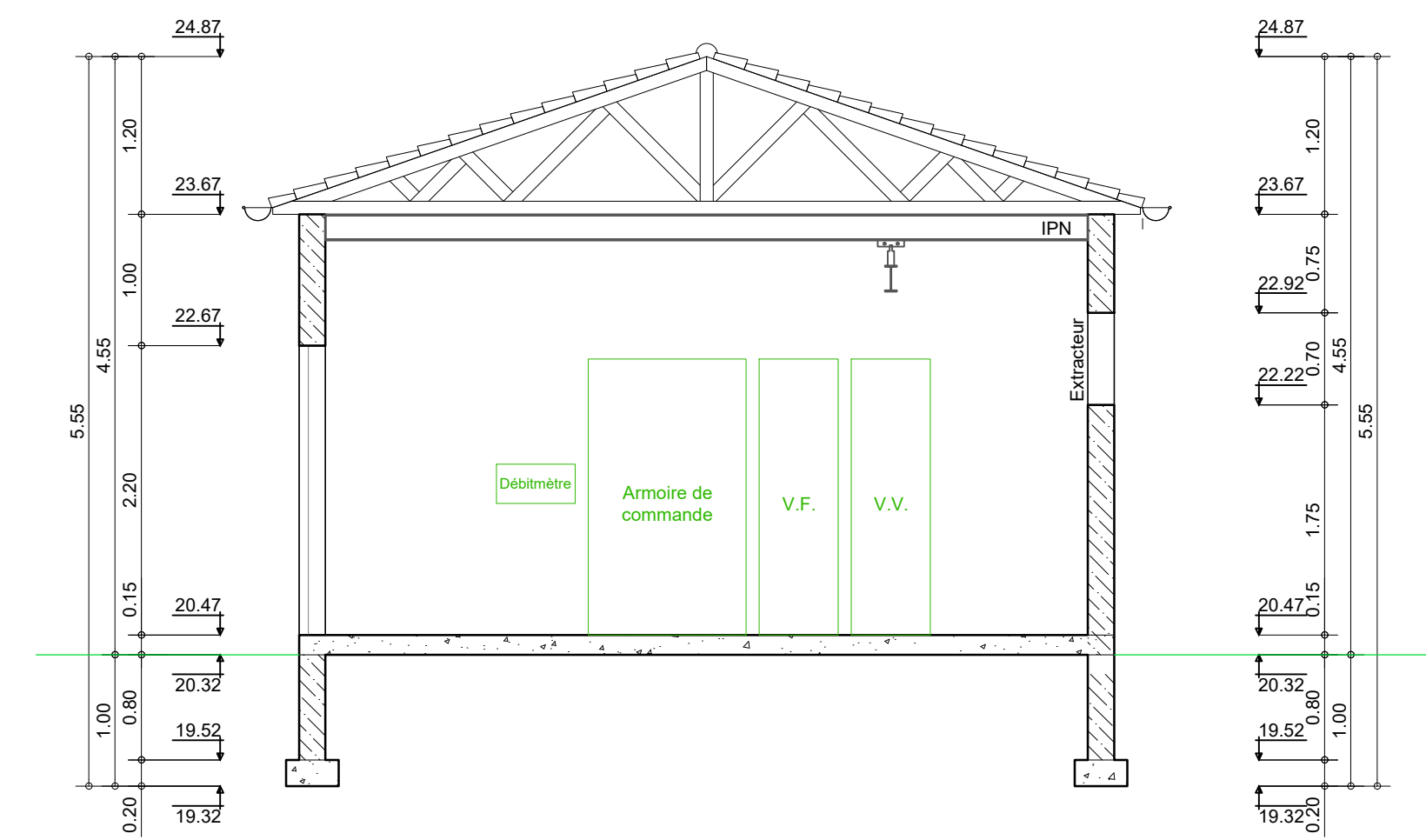


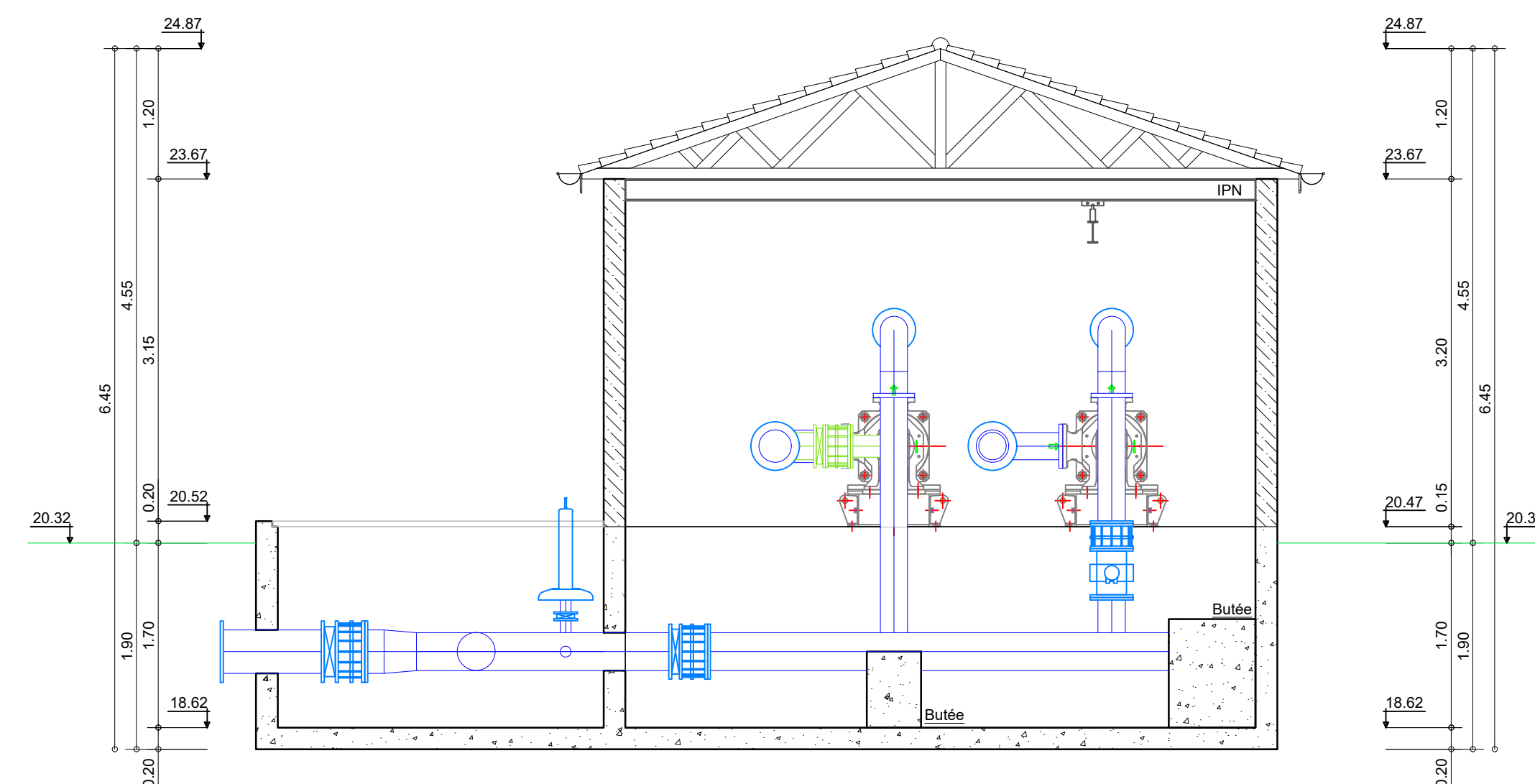
### Vue en plan



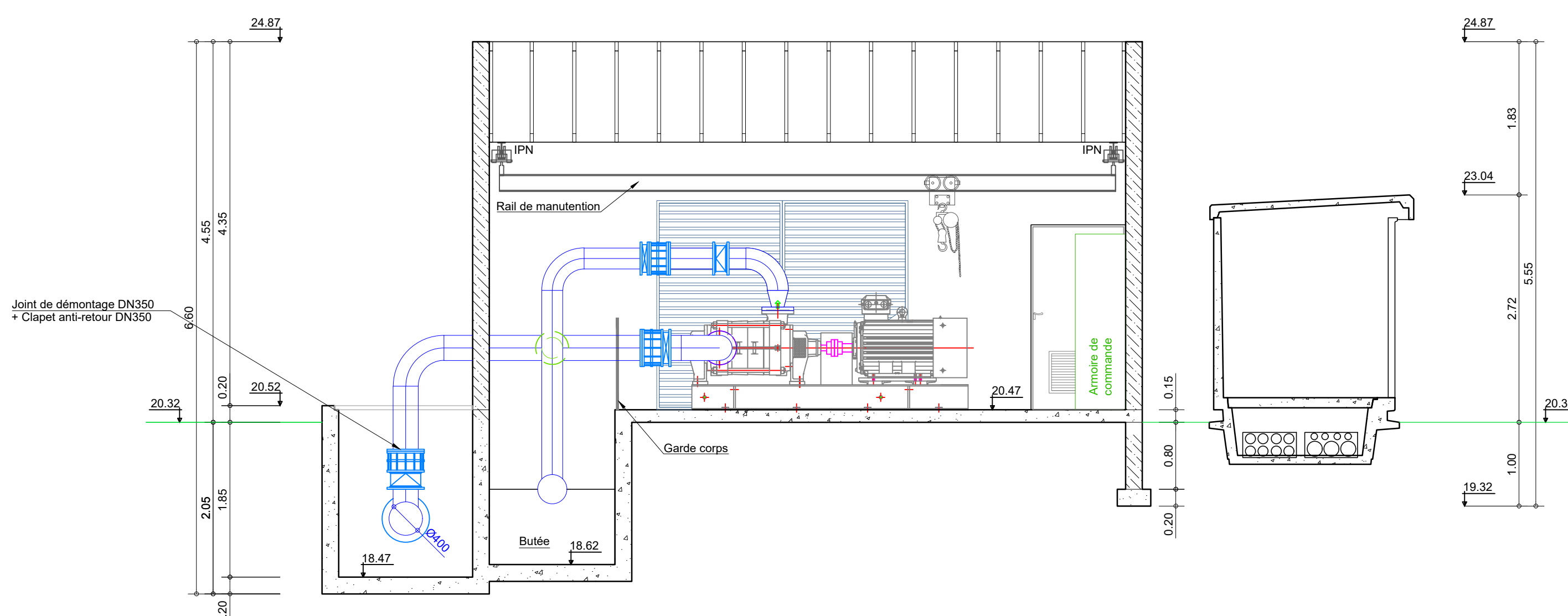
### Coupe DD'



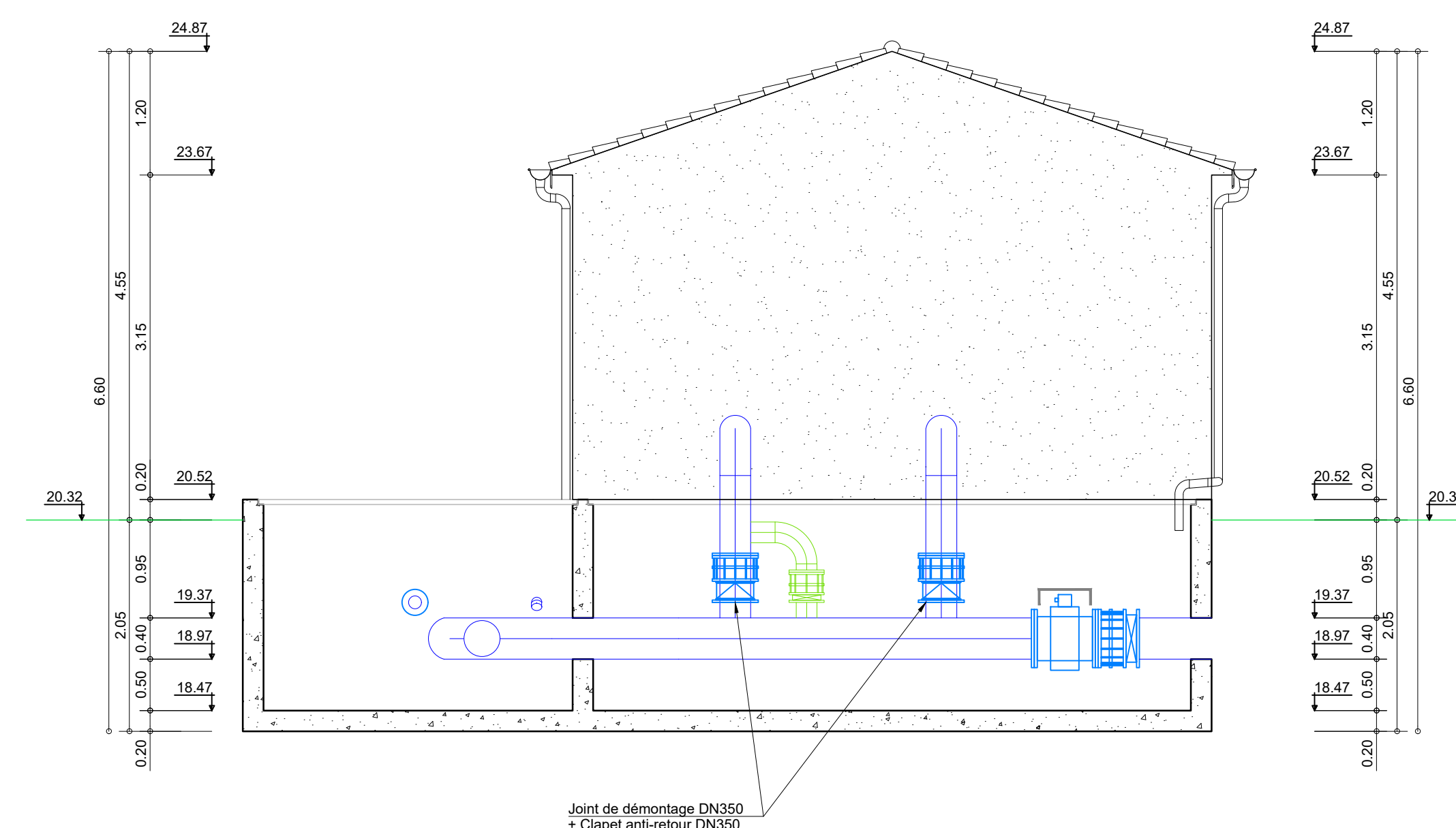
### Coupe CC'



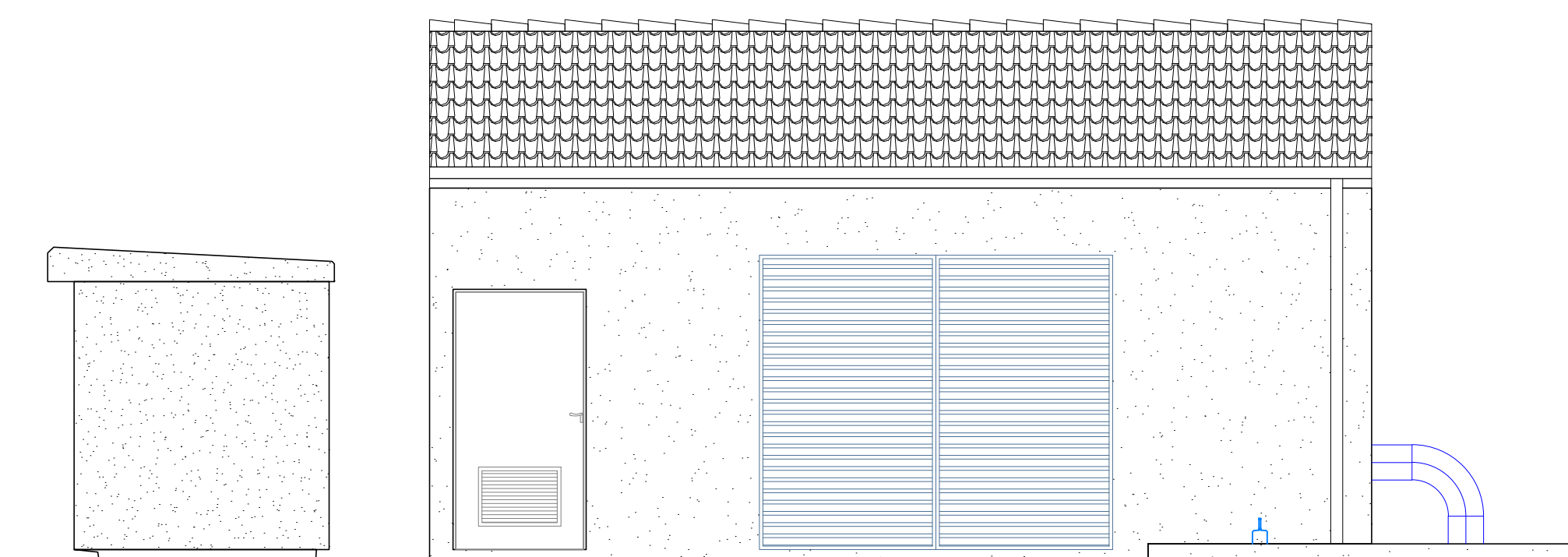
### Coupe AA'



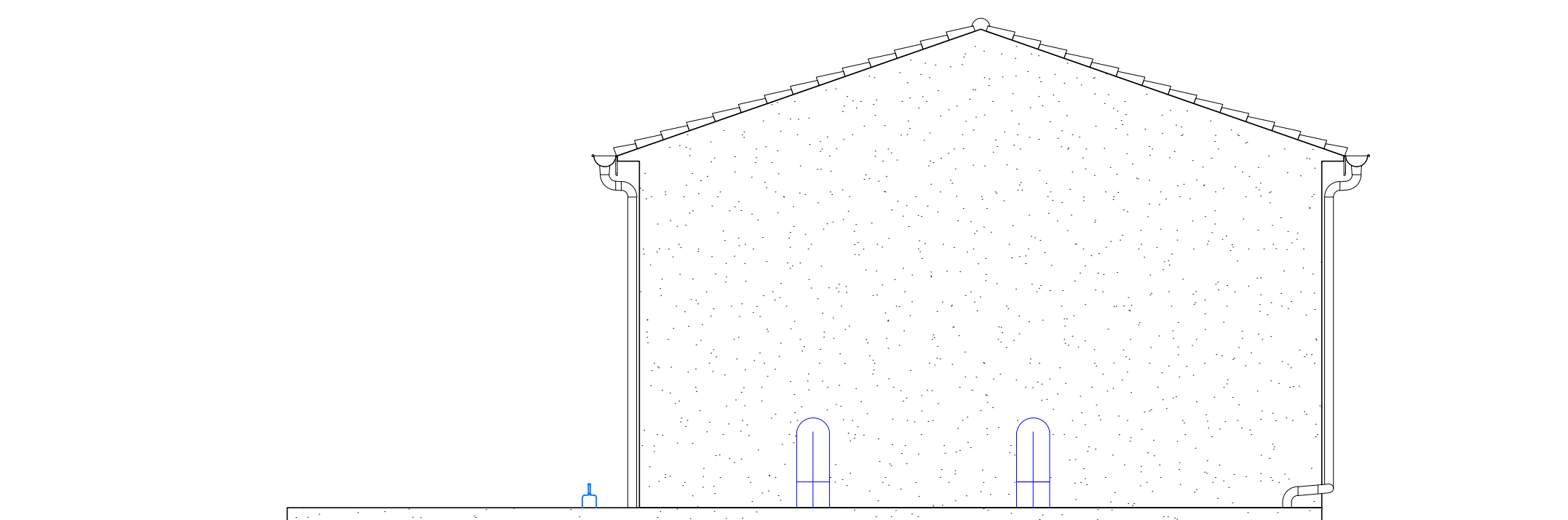
### Coupe BB'



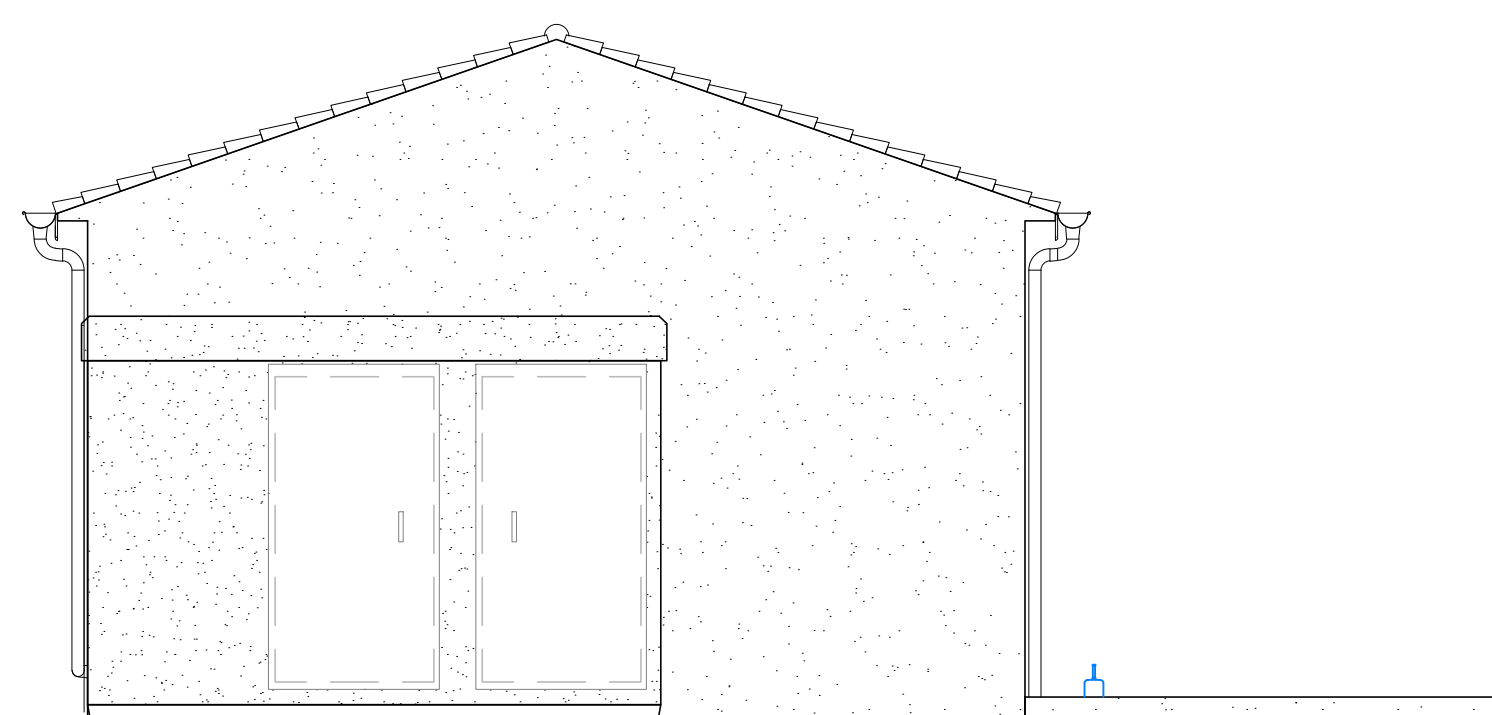
### Façade Nord



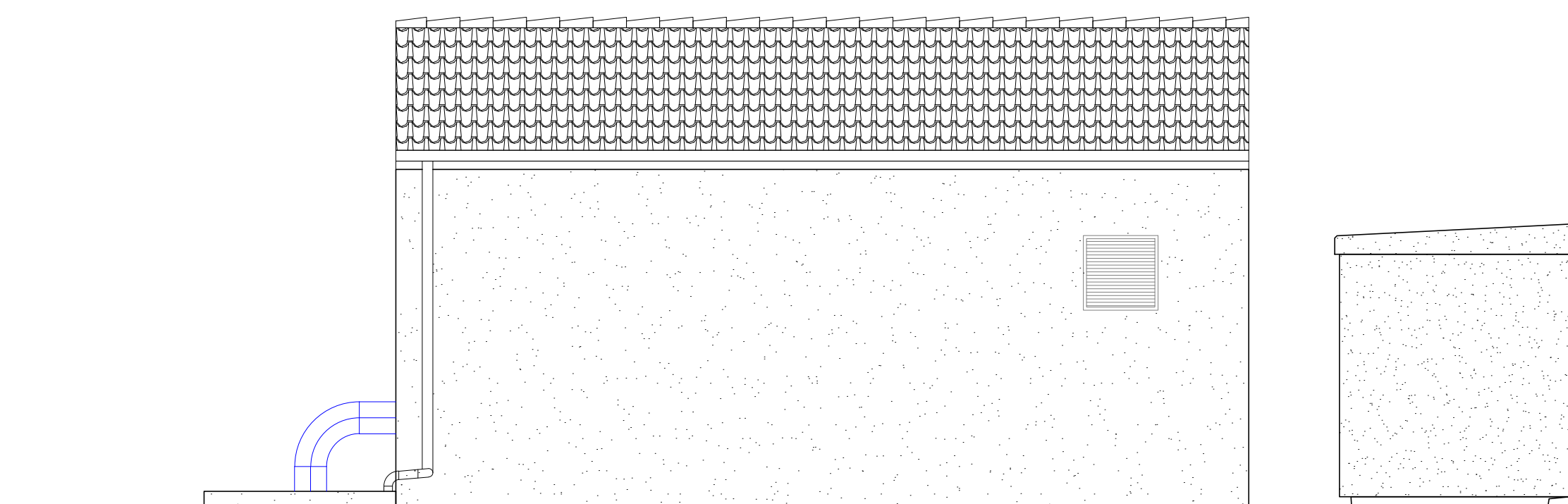
### Façade Ouest



### Façade Est



### Façade Sud



Société Coopérative Anonyme  
de l'Eau des Deux - Sèvres  
Les Rurales  
79230 VOUILLE  
Tél: 05.49.77.15.15

## TRAVAUX DE CONSTRUCTION DE 16 RESERVES DE SUBSTITUTION A L'IRRIGATION

### Station de pompage

Site Les Sablières (SEV4)  
Commune de LA GREVE SUR MIGNON (17)  
Vue en plan, coupes et façades

|         |          |            |
|---------|----------|------------|
| Source: | Echelle: | Etude:     |
|         | 1/50     | S. Serrano |
|         |          | Dessin:    |
|         |          | M. Perez   |

F\_H\_1\_0\_7 | F\_R\_1\_7 | 0\_4 | 0\_1\_SEV4 | 04

Ref. : Novembre 2021



Chemin de Lalette CS 50449  
65004 Tarbes Cedex  
Tel : 05 62 51 71 49  
Fax : 05 62 51 71 30  
WWW.CACG.FR