

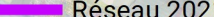
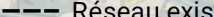
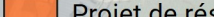


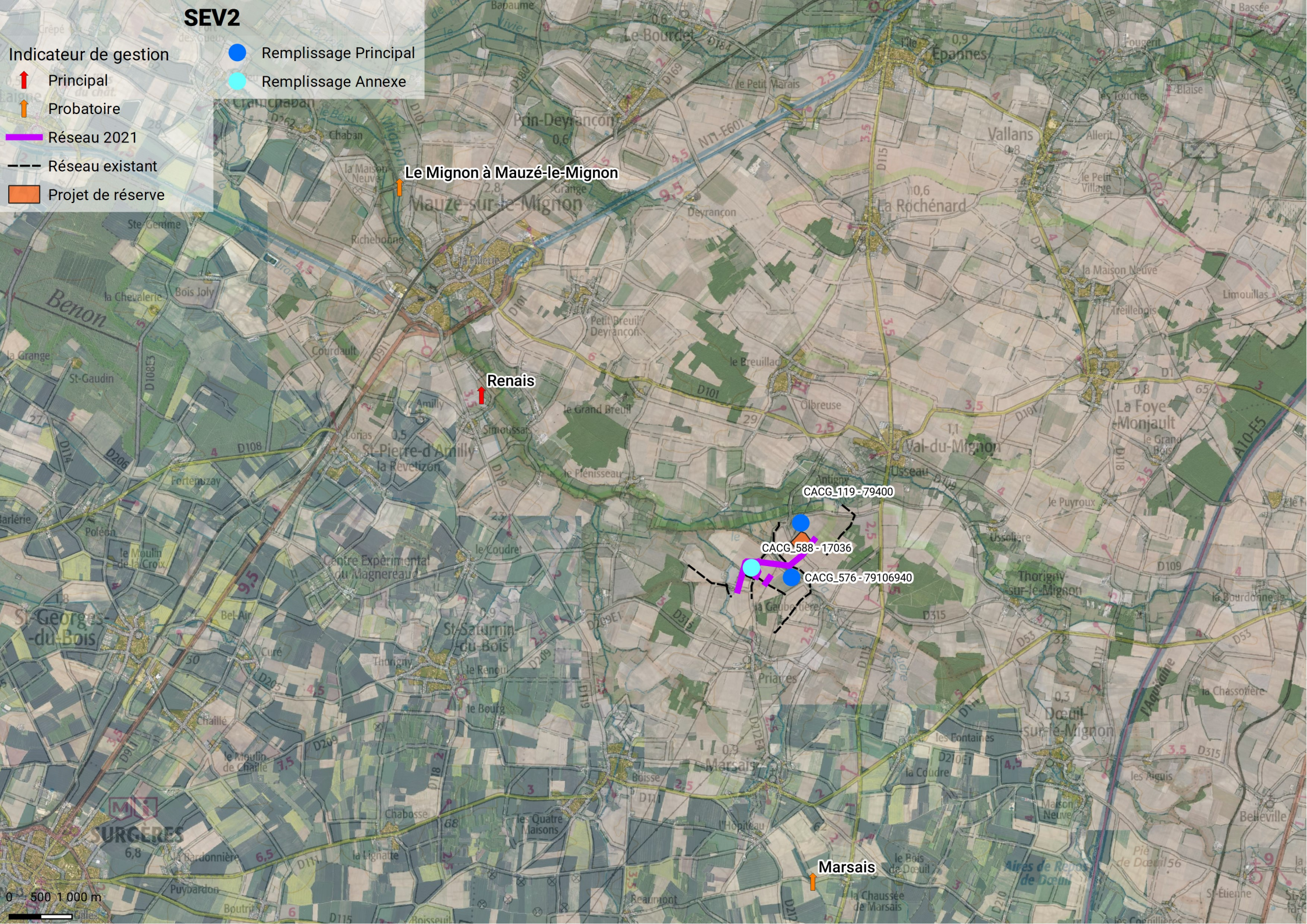


SEV2

Indicateur de gestion

-  Principal
-  Probatoire
-  Réseau 2021
-  Réseau existant
-  Projet de réserve

-  Remplissage Principal
-  Remplissage Annexe



Le Mignon à Mauzé-le-Mignon

Renais

CACG 119 - 79400

CACG 588 - 17036

CACG 576 - 79106940

Marsais